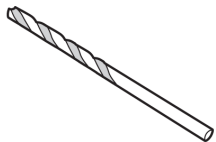
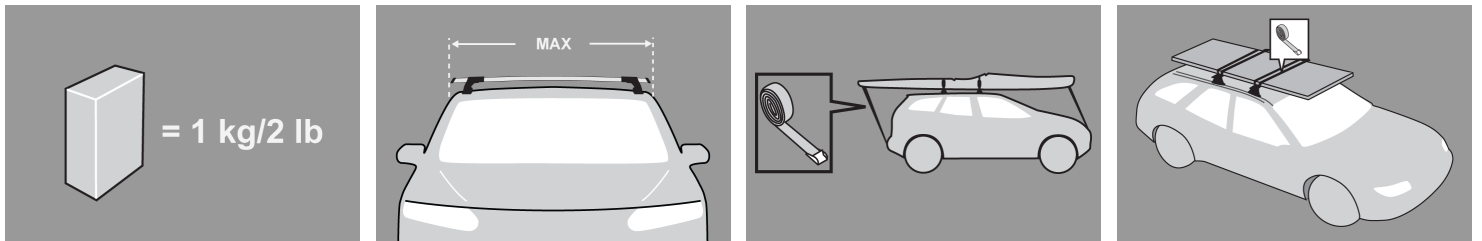


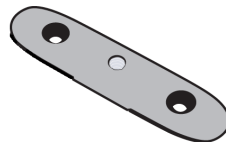
GB Fitting Instructions for Basic Carrier



x 1



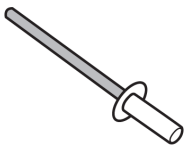
x 4



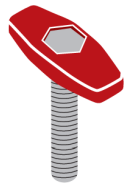
x 4



x 8



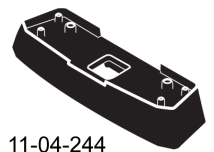
x 8



x 4



x 4



x 4

11-04-244



MAX kgs

🚩 **W/P WHD**

MAX kgs

🚩 **W/P WHD**

Toyota

Hilux Double Cab, 4dr Ute 04-+
Hilux Double Cab, 4dr Ute May 05-+
Vigo , 4dr Ute 04-+

| | | |
|----|----|-----|
| EU | 75 | 100 |
| NZ | 75 | 100 |
| EU | 75 | 100 |

Hilux Double Cab, 4dr Ute 05-+
Hilux Double Cab, 4dr Ute May 05-+

| | | |
|----|----|-----|
| ZA | 75 | 100 |
| AU | 75 | 100 |

Items you will require:

- Tape measure
- Pen
- Flat-head screwdriver
- Craft knife
- Side cutters or tin snips
- Hammer
- 8mm (3/8") punch
- Cordless drill
- Depth stop
- Vacuum cleaner
- Rust inhibitor
- Small paint brush
- Neutral cure silicon sealant
- Rivet gun

Attention:

- Attaches with riveted mounts under rubber ditch mould. Professional installation advised.

First Time Installation



- Remove parts from inside the package and check. Contact your dealer if any parts are missing or damaged.



- This kit fits type A, B, C and D.
- These instructions show type A crossbar fitted. They also apply to type B, C and D.



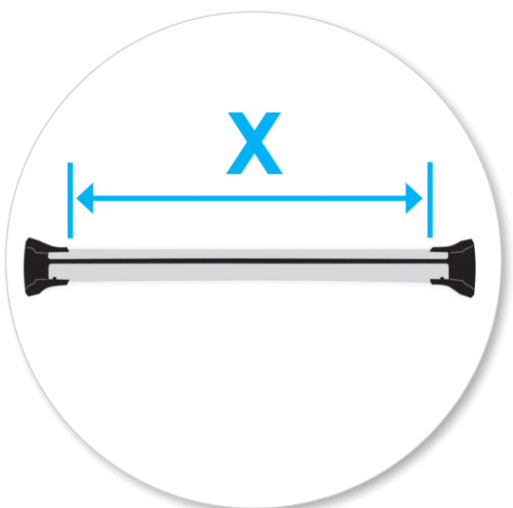
- Use keys to remove covers.



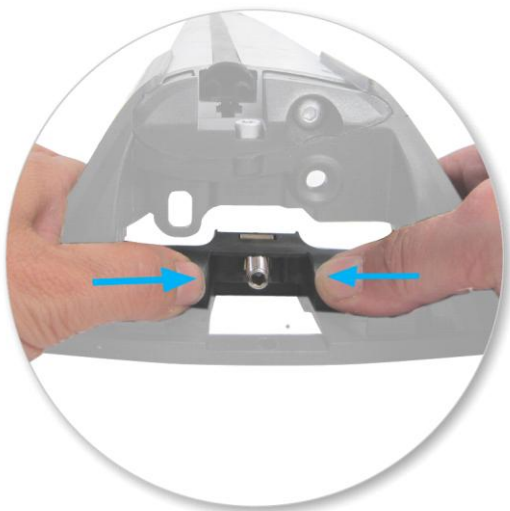
- Use hex screwdriver to reverse adjusting screw 10 turns.



- Press adjusting screw and pull crossbar legs out. Refer to the crossbar instructions for crossbar adjustment.
- Ensure each end of the crossbar is adjusted equally.



- Adjust crossbar in or out to suit vehicle.
- Please check the rear of this manual for information relating specifically to your vehicle.



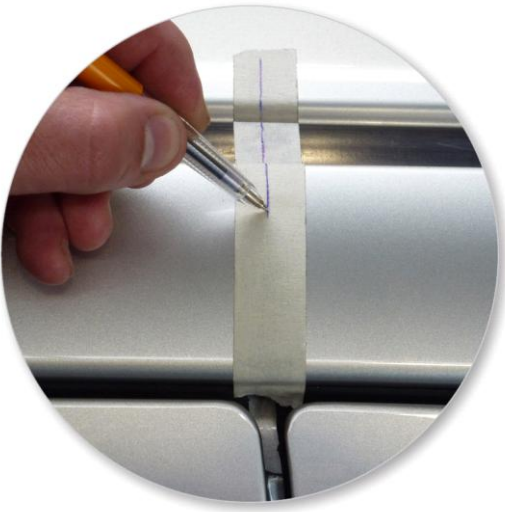
- Remove plastic clamp block by gripping bar leg with fingers and push firmly with thumbs until clamp block drops out behind leg.



- Select plastic internal block (from fitting kit) and insert into foot.
- Repeat for all legs.

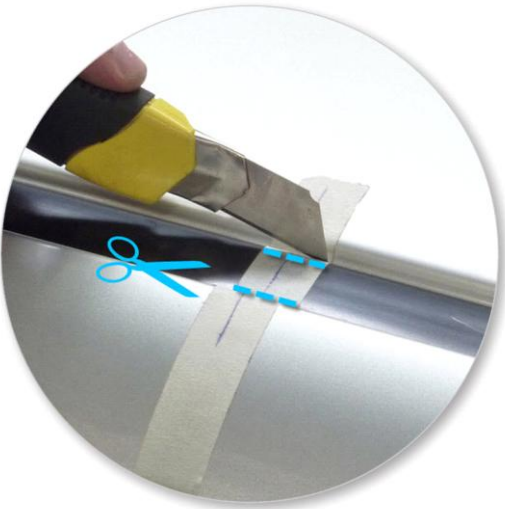


- Fit rubber pads (supplied with fitting kit) to foot. Pad may vary in shape to that shown.
- Make sure the pad fits into the holes underneath the foot.

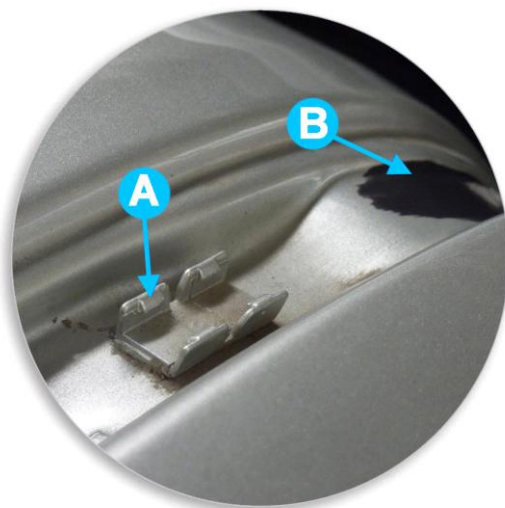


- RECOMMENDED POSITION DUE TO AIRBAGS IN ROOF:
Front: above centre door pillar (as shown).
Rear: 700mm (27 1/2") rearwards from centre door pillar.
- Apply masking tape to vehicle roof in all four positions.
- Mark reference point on masking tape with a pen.

Permanent Mount Fitment



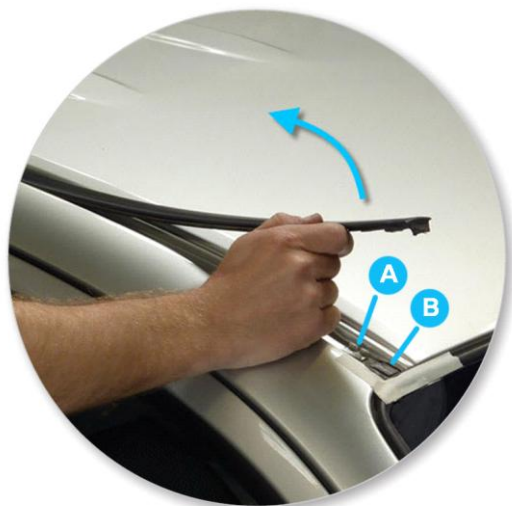
- Carefully cut tape to separate ditch mould from roof.
- Repeat for all four positions.



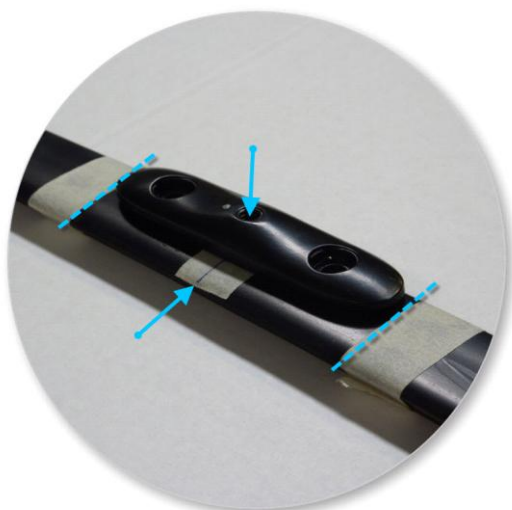
- Ditch mould held at each end by:
A = Plastic retaining clip.
B = Double sided tape.



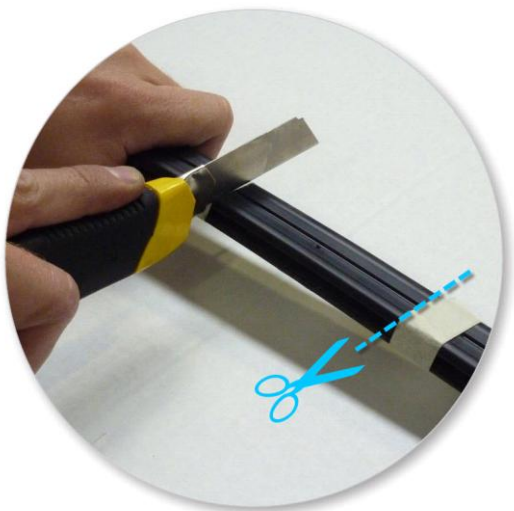
- Apply protective tape as shown.
- Carefully remove ditch mould at the front position with flat-head screwdriver.



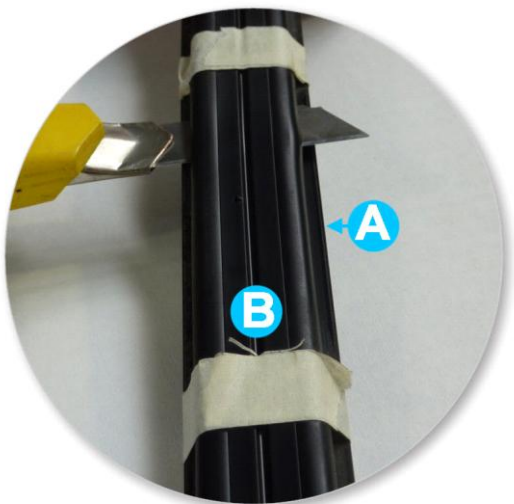
- Unhook rubber ditch mould from plastic retaining clip (A) and double sided tape (B). Lift ditch mould up and out of the channel.
- Completely remove from the vehicle.
- The rubber ditch mould is to be re-installed on the vehicle later.



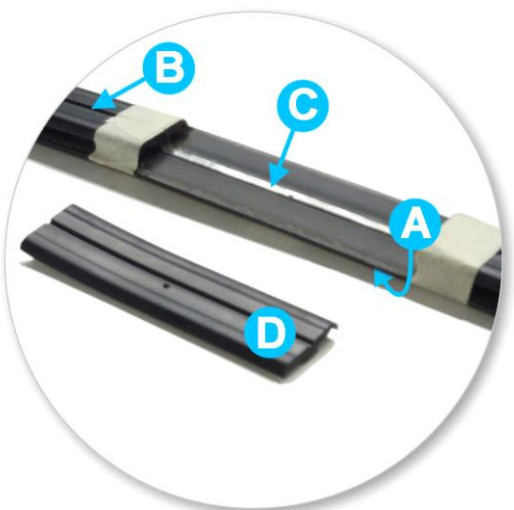
- Line up the centre hole in the mounting block with the marked reference points.
- Wrap tape around rubber ditch mould to mark end position of mount.



- Turn rubber ditch mould over.
- Place on a workbench.
From the bottom, cut 3/4 of the way through the rubber ditch mould as shown. Blade should contact steel strip.



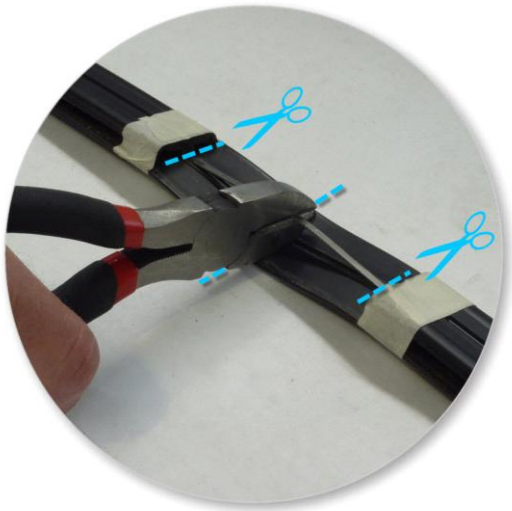
- Carefully cut rubber ditch mould between faces along steel strip.
A = Top face
B = Bottom face



- A = Top
B = Bottom
C = Steel strip
D = Removed excess



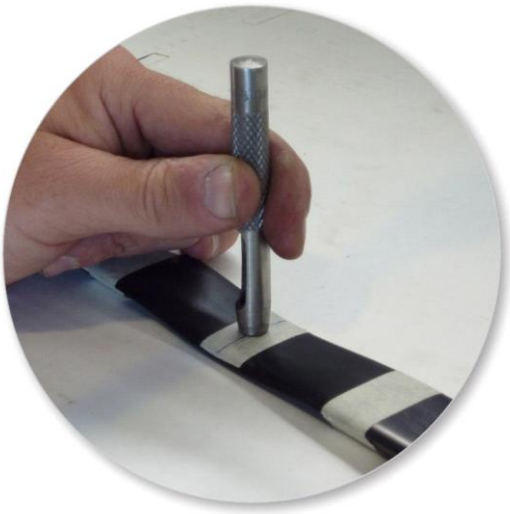
- Check fit.



- Cut steel strip in centre using side cutters.
- Lift and cut steel strip at each end.



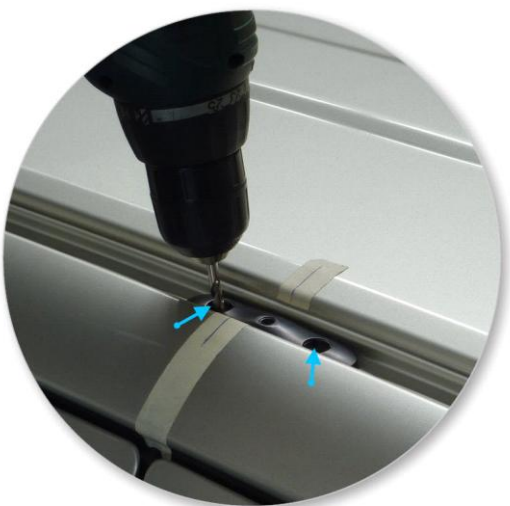
- Remove cut peices of steel strip.
- Repeat for all four positions.



- Turn rubber ditch mould over.
- Punch 8mm (3/8") hole through top of rubber ditch mould, centered on mark as shown. Remove excess from hole.



- Position as shown.
- Line up the centre hole in the mounting block with the marked reference points.



- Lightly mark position of outside holes of the mounting block in the roof channel.



- CAUTION: Maximum depth 7mm (1/4"). Use 7mm (1/4") drillstop over supplied 4.9mm (1/4") drill bit. Drill two outside holes at marked positions.



- Vacuum and clean swarf from channel.



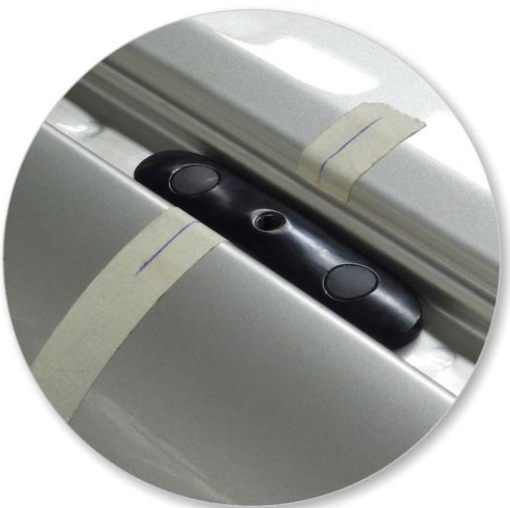
- Treat holes to prevent corrosion.



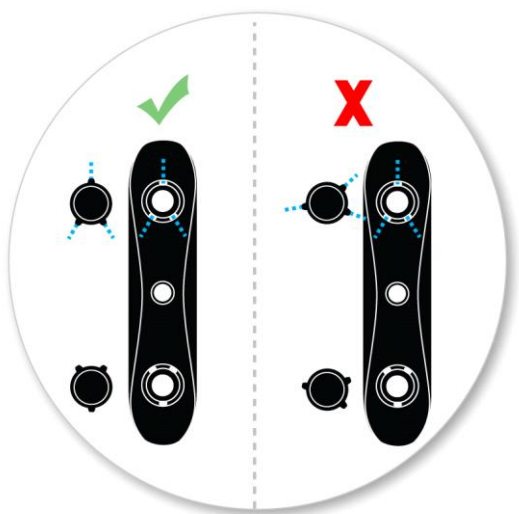
- Apply neutral cure silicon sealant in and around drilled holes.



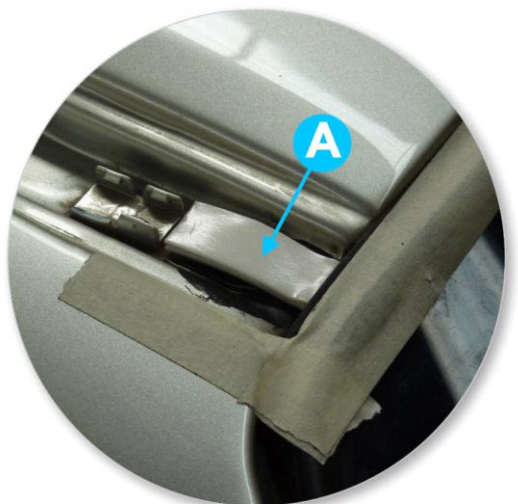
- Install rivets through permanent mount blocks.
- Rivet into place.



- Fit plastic plugs to permanent mount blocks over rivet heads.



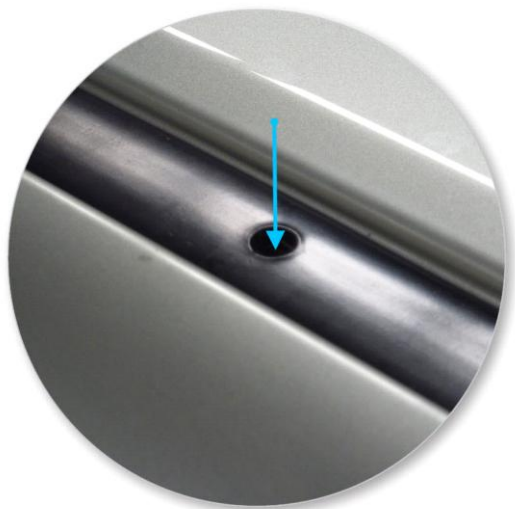
- Assemble as shown.



- A = Double sided tape
Apply as shown, at both ends of the roof.



- Re-install rubber ditch mould in roof channel.
Remove all masking tape.



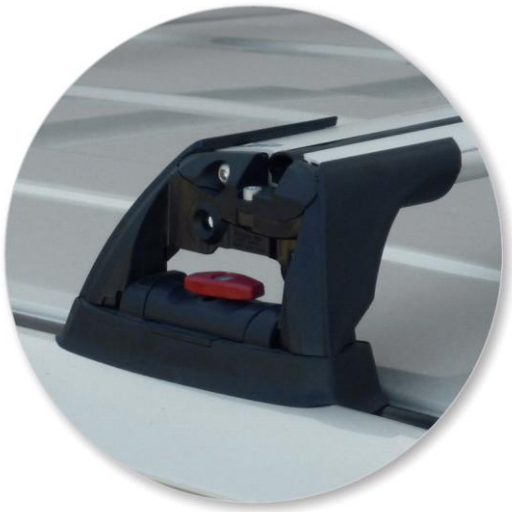
- Ensure the hole in rubber ditch mould lines up with mount.



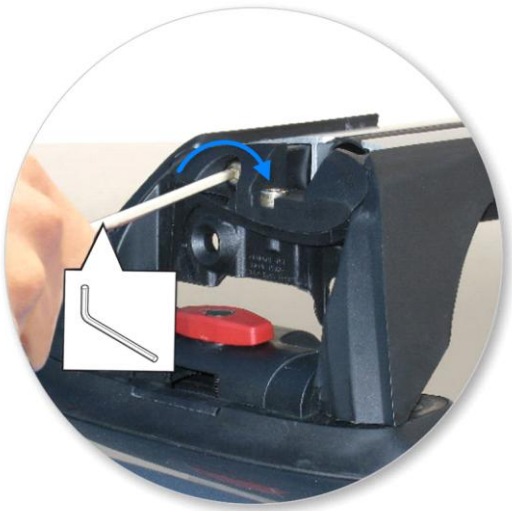
- Place crossbar on vehicle.



- Tighten the red plastic knob.



- Ensure the red plastic knob is in the position shown when fully tightened.



- Tighten adjusting screw to 5 Nm (3.7 ft lb).



- Check crossbar is securely attached to the vehicle.
- Use keys to fit and lock covers

CAUTION:

Recheck all fasteners immediately after a load is applied to the crossbars.

Regularly check screws are tight.

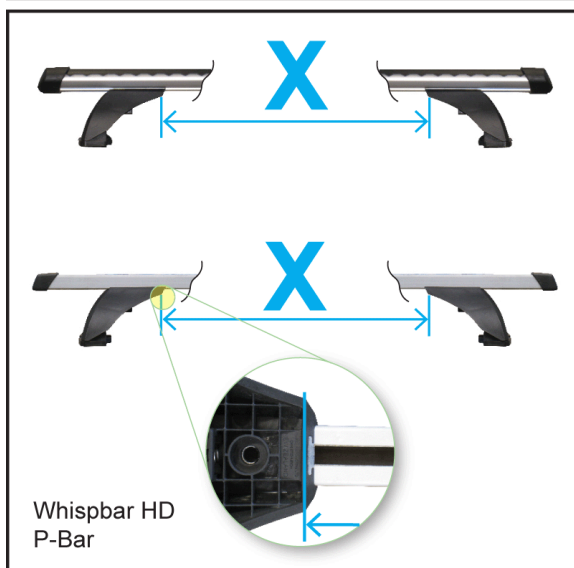
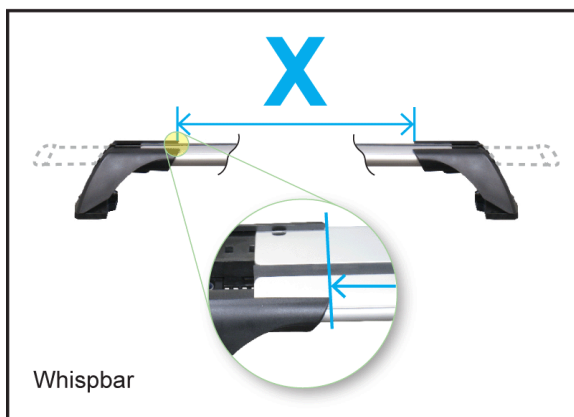
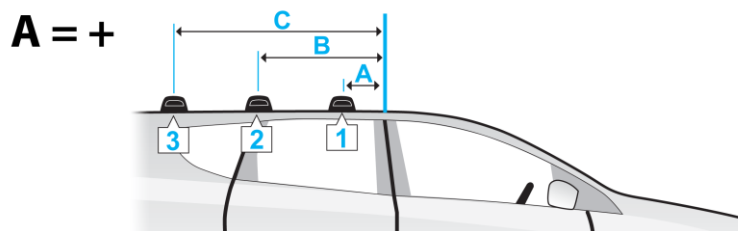
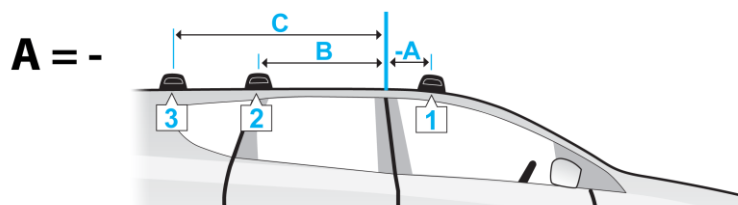
Maintenance

- Clean the car roof and surfaces of the product that will be in contact with the car roof.
- Follow the fitting instructions for fitting the product to your vehicle. Make sure all steps are carried out in order.
- Set crossbars a minimum distance of 700mm (27 1/2") apart where no other distance is specified in the fitting instructions. This is especially important when carrying long loads.
- Check unit is securely attached whenever you refit it to the vehicle. If the unit feels loose, refer to the fitting instructions and readjust.
- Some glass/panoramic roofs and radio antennae may not be able to be used when the product is fitted.
- Do not modify this product.
- Refer to the maximum permitted load capacity specified in the fitting instructions. Do not exceed the vehicle manufacturers roof load rating if it is lower than the maximum load capacity specified in the fitting instructions.
- Loads should not overhang the sides of the product and be evenly distributed with the lowest possible centre of gravity.
- Long loads should be secured with non-elastic straps to the front and rear of the vehicle.
- Objects with pointed ends (e.g. ski poles) should be carried with the pointed ends to the rear of the vehicle.
- Remove all loose or removable objects from the load prior to loading.
- Make sure all loads are securely fastened with non-elastic straps. Check regularly during longer journeys.

- A loaded roof rack system can alter the performance of your vehicle. Be especially aware of the effects of side winds, changing of direction, and braking performance. Avoid rapid acceleration and deceleration. Drive carefully.
- Note that the total height of the vehicle increases when upright loads are carried.
- Products should be locked during transport if they have locks fitted.
- Check and replace worn out or defective parts.
- Keep the product clean and maintained.
- Never drive into a car wash with the roof rack system fitted.
- Lubricate locks and adjusting screws at regular intervals.
- Remove the products from the vehicle when not in use. Make sure all loose parts are stored safely.

-
- Hubco Automotive Ltd
P. O. Box 11017
Christchurch
NEW ZEALAND

www.whispbar.com
www.whispbar.com.au
www.whispbar.co.nz
www.whispbar.co.uk
www.whispbar.co.za
www.whispbar.eu
www.whispbar.ca



- Toyota Hilux Double Cab, 4dr Ute 04++ (EU)
- Toyota Hilux Double Cab, 4dr Ute 05++ (ZA)
- Toyota Hilux Double Cab, 4dr Ute May 05++ (AU)
- Toyota Hilux Double Cab, 4dr Ute May 05++ (NZ)
- Toyota Vigo , 4dr Ute 04++ (EU)

| A | B | C | X | | |
|---|-------------|---|---------|--------------|---|
| | | | 1 | 2 | 3 |
| - | 700mm | - | 912mm | 907mm | - |
| - | 27 9/16ths" | - | 35 7/8" | 35 11/16ths" | - |
| - | 700mm | - | 912mm | 907mm | - |
| - | 27 9/16ths" | - | 35 7/8" | 35 11/16ths" | - |
| - | 700mm | - | 912mm | 907mm | - |
| - | 27 9/16ths" | - | 35 7/8" | 35 11/16ths" | - |
| - | 700mm | - | 912mm | 907mm | - |
| - | 27 9/16ths" | - | 35 7/8" | 35 11/16ths" | - |