



Dear Customer,

Thank you for choosing an UEBLER bicycle rack.

Please observe the work and safety instructions described in these mounting and operating instructions at all times. We will not accept any liability for damage resulting from failure to do so.

Note

This section describes and illustrates how to mount and operate the Uebler i21 bicycle rack. The procedure for the Uebler i31 bicycle rack is similar.

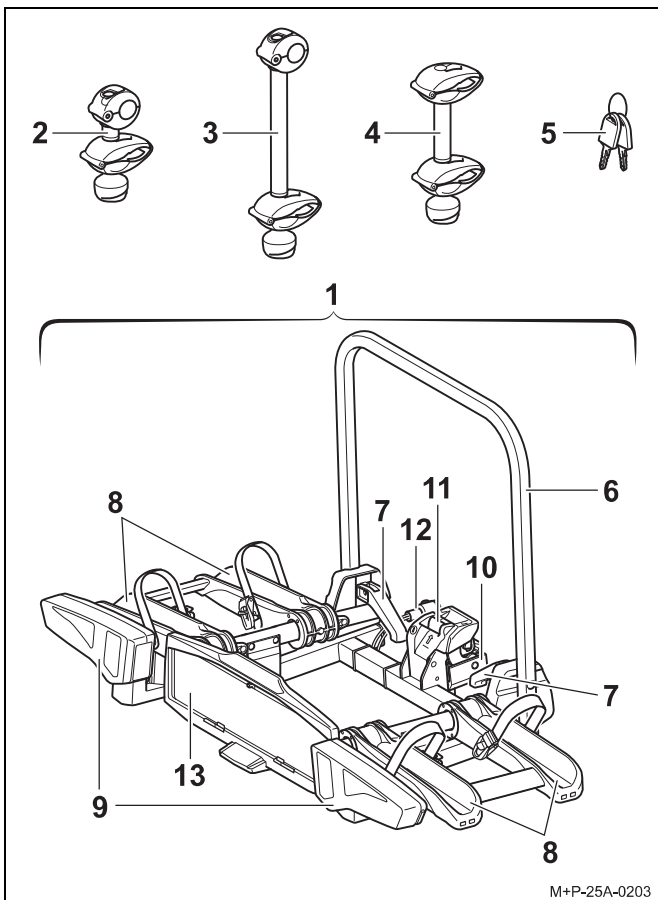
Scope of delivery

| Designation | i21 | i31 |
|--------------------------|----------|----------|
| | Quantity | Quantity |
| 1 Bicycle rack | 1 | 1 |
| 2 Holder for 1st bicycle | 1 | 1 |
| 3 Holder for 2nd bicycle | 1 | 1 |
| 4 Holder for 3rd bicycle | – | 1 |
| 5 Key | 6 | 8 |

Note

The scope of delivery is subject to change. Repairs or replacement of parts must be performed by a specialist workshop. For safety reasons, Uebler recommends only using genuine spare parts available from your specialist dealer.

Parts overview



Note

The holders (2), (3) and (4) are included separately in the delivery package and are not pre-assembled. The keys (5) are inserted in the lock of the holders (2), (3) and (4) and in the lock of the safety lever (11).

Part designation

| Designation | i21 | i31 |
|---------------------------------------|----------|----------|
| | Quantity | Quantity |
| 6 Rack frame | 1 | 1 |
| 7 Quick-release clamp for rack frame | 2 | 2 |
| 8 Wheel rails | 4 | 6 |
| 9 Tail light unit | 2 | 2 |
| 10 Towbar attachment | 1 | 1 |
| 11 Safety lever for towbar attachment | 1 | 1 |
| 12 Plug for lights | 1 | 1 |
| 13 Number plate holder | 1 | 1 |

Part number

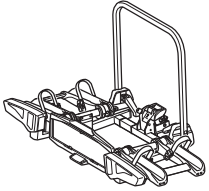
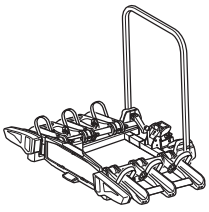
Uebler i21 rack for 2 bicycles
Item no. 15900 (left-hand drive)
Item no. 15901 (right-hand drive)
Uebler i31 rack for 3 bicycles
Item no. 15910 (left-hand drive)
Item no. 15911 (right-hand drive)

ECE type approval number



E24*26R03/03*0086*01

Technical data

| Maximum load (bearing capacity) | | |
|--|---|-------------------|
| Uebler i21: If the vehicle/towbar has no D-value ^a (0) or the D-value ≥ 5.3 kN: Towbar load ^b – rack weight = max. payload | | |
| Towbar load | Rack weight | Max. payload |
| 110 lb (50 kg) |  | 82 lb (37 kg) |
| 132 lb (60 kg) | | 104 lb (47 kg) |
| 154 lb (70 kg) | | 126 lb (57 kg) |
| ≥ 165 lb (≥ 75 kg) | | 132 lb (60 kg) |
| Uebler i21 = approx. 29 lb (13 kg) | | |
| Uebler i31: If the vehicle/towbar has no D-value ^a (0) or the D-value ≥ 6.7 kN: Towbar load ^b – rack weight = max. payload | | |
| Towbar load | Rack weight | Max. payload |
| 110 lb (50 kg) |  | 75 lb (34 kg) |
| 132 lb (60 kg) | | 97 lb (44 kg) |
| ≥ 154 lb (70 kg) | | 119 lb (54 kg) |
| Uebler i31 = approx. 35 lb (16 kg) | | |

a See type plate on towbar

b If the values for the towbar and the vehicle are different, the lower value must be used.

| Power supply | |
|---------------------------------|--------------|
| Uebler i21, for max. 2 bicycles | 13-pin, 12 V |
| Uebler i31, for max. 3 bicycles | 13-pin, 12 V |

| Maximum tube diameter of bicycle frames | |
|---|----------------------------|
| Round tube | 2.9 inch (75 mm) |
| Oval tube | 2.9x1.8 inch (75x45 mm) |

Attaching and removing the bicycle rack

⚠ Attention

The towbar and the vehicle must be suitable for mounting a bicycle rack:

- Maximum towbar load (see type plate on the towbar and vehicle operating manual)
- D-value of the ball head (see “Technical data” on page 14)
- The towbar must be made of St52-3 or stronger (see type plate on towbar).

If not, the bicycle rack and the bicycles mounted on it may come loose from the vehicle, injuring you and other persons, or may cause an accident.

The ball head must be cleaned and degreased prior to mounting.

⚠ Attention

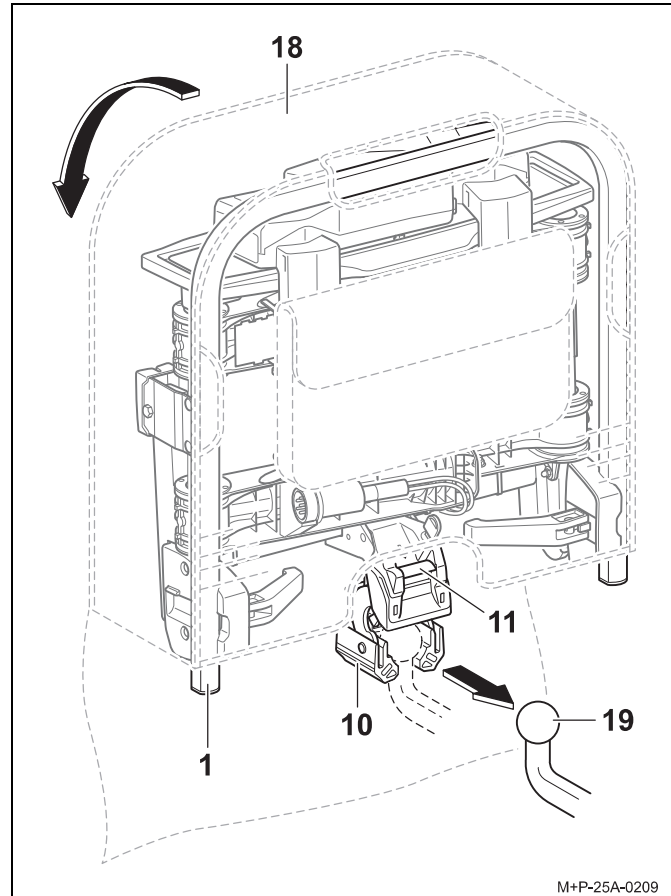
Failure to take account of the altered vehicle dimensions (width, height, depth) with the bicycle rack attached may cause injury to you and other persons and/or cause damage to property.

Please take account of the altered vehicle dimensions when driving through entrances and narrow passages. Be careful when reversing.

⚠ Attention

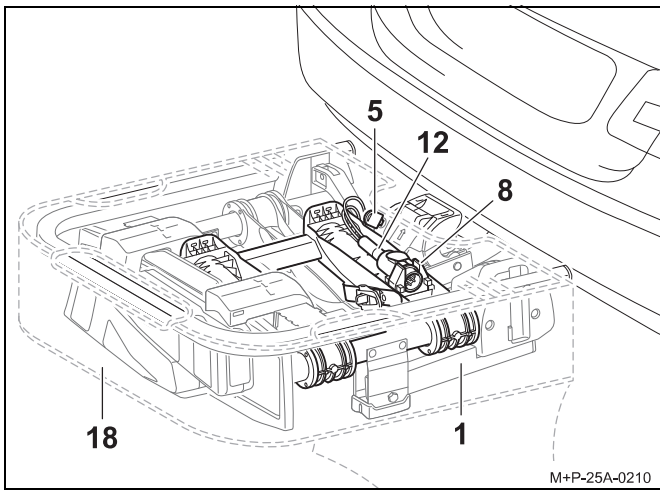
Check that the lights are in perfect working order before each journey, otherwise accidents may occur.

Mounting the bicycle rack on the vehicle

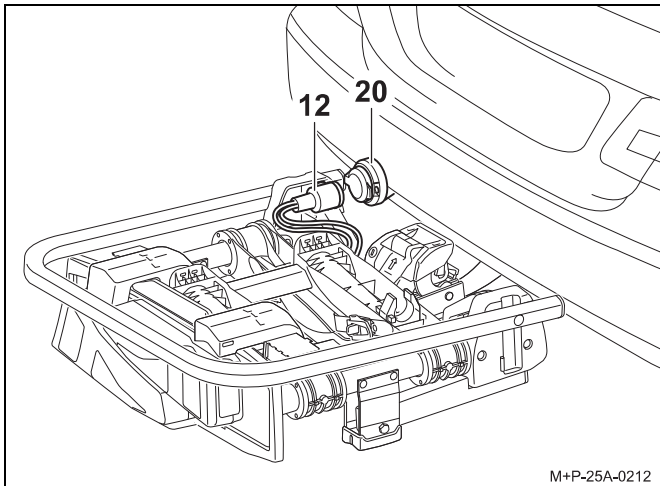


1. Open the flap of the bag¹ (18).
2. Press the safety lever (11) so that the attachment (10) comes out.
3. Hold the bicycle rack (1) upright and push it with the attachment (10) onto the ball head of the towbar (19).
4. Tilt the bicycle rack (1) downwards until the safety lever (11) audibly engages.
The red marking on the safety lever (11) must no longer be visible.
5. Check that the bicycle rack (1) is parallel to the bumper and roughly parallel to the ground.
Shake the bicycle rack (1) to check that it is firmly fitted. If necessary, take off the bicycle rack (1) and mount it again.

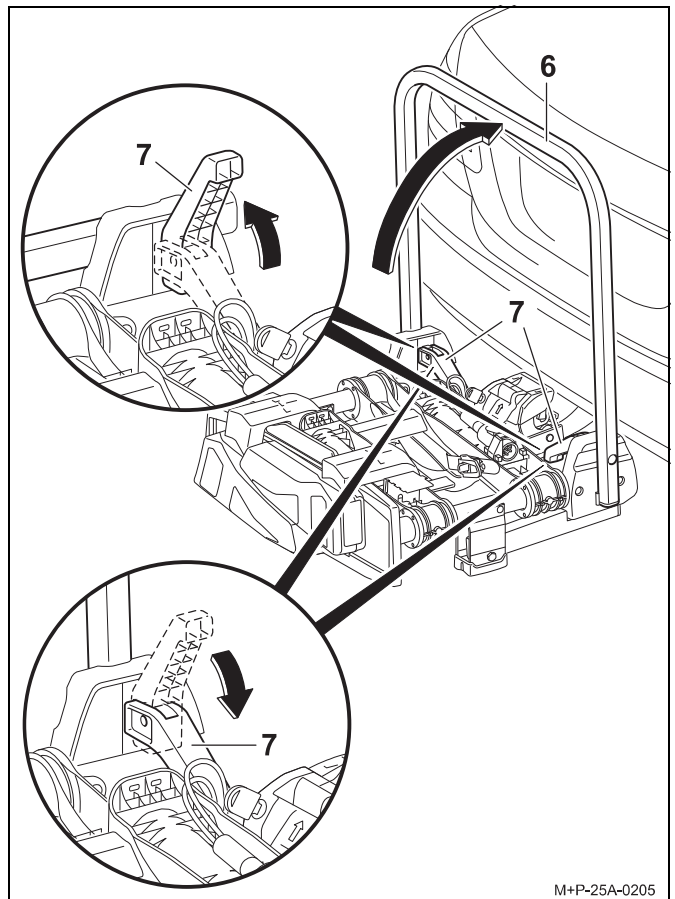
¹ Bag optionally available (for Uebler i21 rack item no. 19840, for Uebler i31 rack item no. 19850)



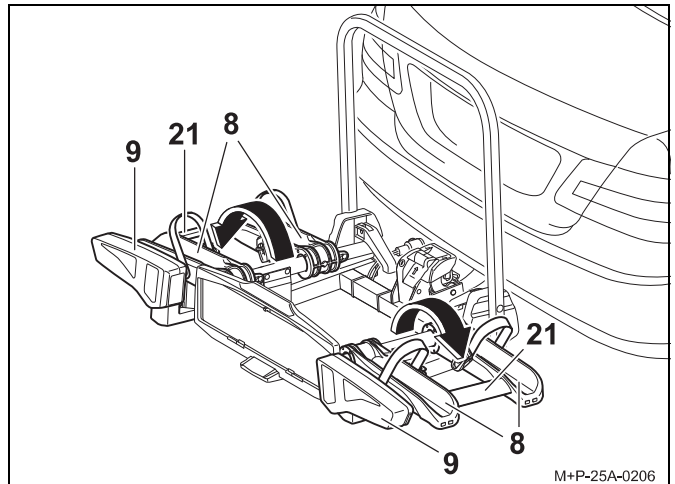
6. Pull the bag (18)² off the bicycle rack (1).
7. Lock the bicycle rack (1) with the key (5) and remove the key (5).
8. Pull the plug (12) out of the plug holder on the wheel rail (8).



9. Connect the plug (12) to the socket (20) on the vehicle and turn it clockwise as far as it will go.



10. Open up the quick-release clamp (7).
11. Fold up the rack frame (6) and fully close the quick-release clamp (7) again to fasten the rack frame (6).



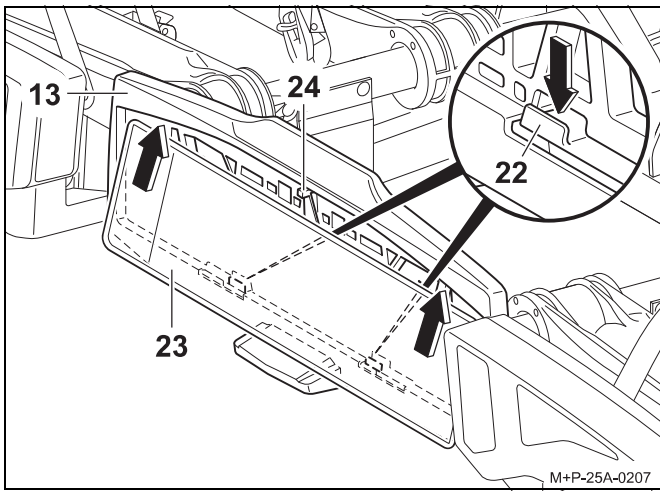
12. Fold out the wheel rails (8) and tail lights (9) by the crosspieces (21) until they engage.

⚠ Attention

Always fold out the wheel rails (8) by holding the crosspieces (21) and not the tail light unit (9). Otherwise the tail light unit (9) may be damaged.

13. Check that the lights work correctly.

2 Bag optionally available (for Uebler i21 rack item no. 19840, for Uebler i31 rack item no. 19850)



14. Press the holder (22) down. Slide the number plate into the number plate holder (13), push it up and press it all the way in.
15. Let go of the holder (22) and check that the number plate is securely fitted.

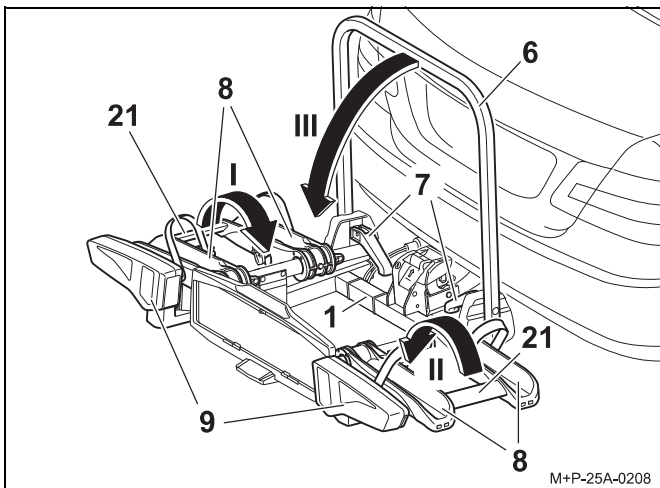
Note

To put in larger number plates, press back the stopper (24) and push the number plate all the way into the number plate holder (13).

Note

The number plate on the bicycle rack must match the vehicle's registration number and must be clearly legible.

Removing the bicycle rack



1. Fold in the wheel rails (8) and tail lights (9) on the left side (arrow I) by the crosspieces (21).
2. Fold in the wheel rails (8) and tail lights (9) on the right side (arrow II) by the crosspieces (21).

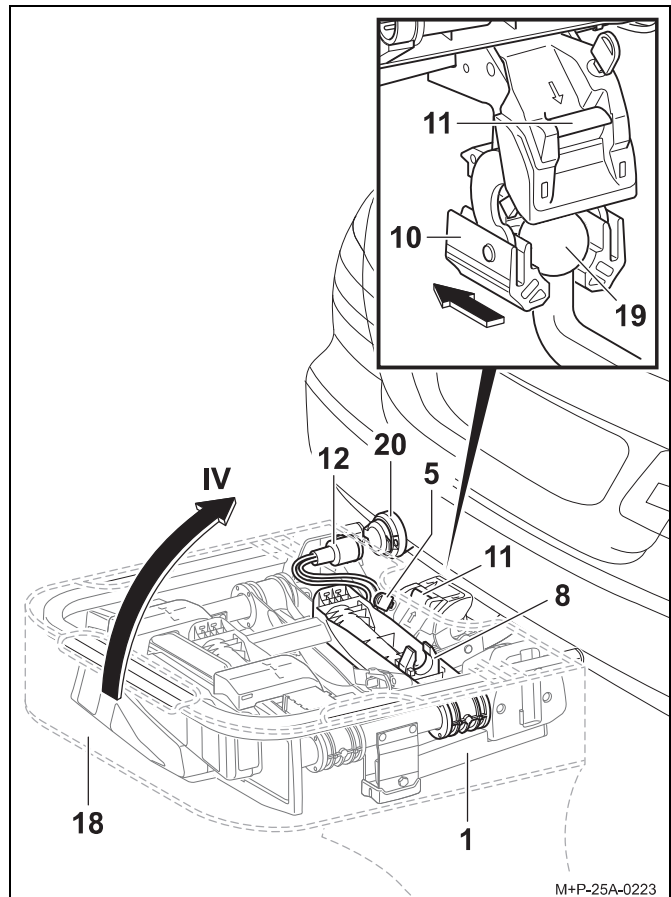
⚠ Attention

Always fold in the wheel rails (8) by holding the crosspieces (21) and not the tail light unit (9). Otherwise the tail light unit (9) may be damaged.

3. Open up the quick-release clamp (7).
4. Fold down the rack frame (6) (arrow III) and fully close the quick-release clamp (7) again to fasten the rack frame (6).

Note

Regularly clean the quick-release clamps (7) and rack frame (6) with soapy water, especially if they are dirty or stiff.



5. Remove the plug (12) from the socket (20) and push it into the plug holder on the wheel rail (8).
6. Unlock the bicycle rack (1) with the key (5).
7. Push the bag (18)³ onto the bicycle rack (1).
8. Press the safety lever (11) and push the bicycle rack (1) upright (arrow IV).
9. Pull the bicycle rack (1) back off the ball head of the towbar (19).
10. Put the bicycle rack (1) with the attachment (10) on the ground to close the attachment (10).
11. Close the flap of the bag (18)³.
12. Remove the holders (2), (3) and (4) in the reverse order, see page 17 and put them away in the side pocket of the bag (18)³.

³ Bag optionally available (for Uebler i21 rack item no. 19840, for Uebler i31 rack item no. 19850)

Attaching and removing bicycles

⚠ Attention

The towbar rack is only intended for transporting bicycles. None of the bicycles carried on the rack may weigh more than 66 lb (30 kg). The maximum load capacity of the bicycle rack, the maximum towbar load, the gross vehicle weight rating and the gross axle weight rating (see vehicle owner's manual) may not be exceeded. Otherwise, the rack and the bicycles mounted on it may come loose, injuring other persons or causing an accident.

⚠ Attention

The bicycles must be fastened evenly and with a low centre of gravity on the bicycle rack. Each must be secured against falling off using a holder on the bicycle frame and lashing straps on the front and rear wheels. Otherwise, the bicycles and/or loose parts could become detached from the vehicle, causing an accident and possible property damage and injury to other road users. Before mounting, remove child seats and all loose parts such as water bottles, saddlebags and E-bike batteries from the bicycles and put them away.

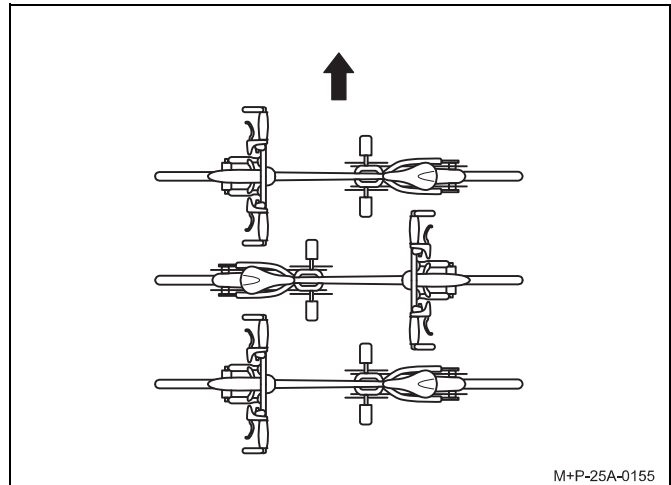
⚠ Attention

There is a risk of injury if bicycles slip off or fall over. Make sure that the bicycles cannot slip off or fall over. Only put on and take off the bicycles with the help of another person.

⚠ Attention

On some types of vehicle, the rack and the bicycles may be positioned too close to the vehicle's exhaust system. The hot exhaust pipe and fumes can damage the rack and/or the bicycles. In this case, the bicycle rack is not suitable for use. For bicycles with carbon parts, consult the manufacturer/dealer to find out whether they are suitable for transport on the rack.

Arrangement of the bicycles

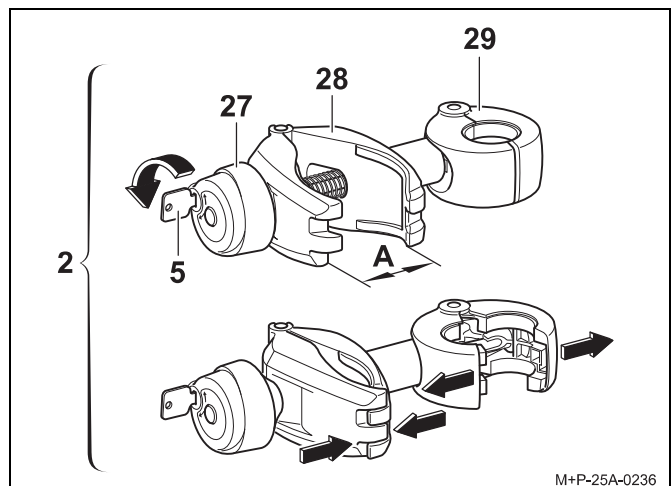


Please note the arrangement of the bicycles in the direction of travel (arrow) as shown here.

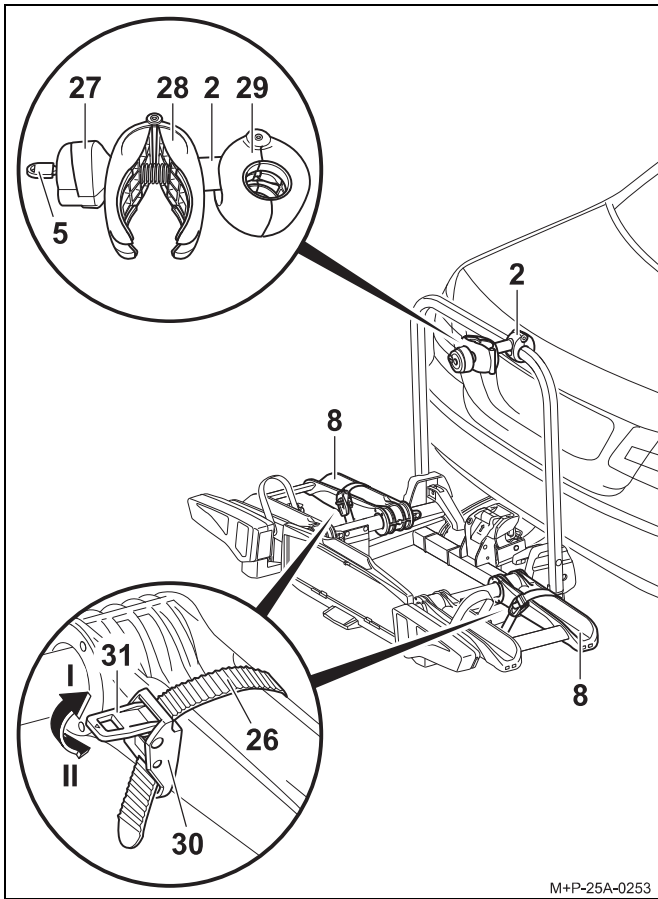
Note

Mount heavy bicycles close to the vehicle and light bicycles (e.g. children's bikes) further out on the rack. Mount the first bicycle with its sprocket facing the vehicle.

Mounting the first bicycle

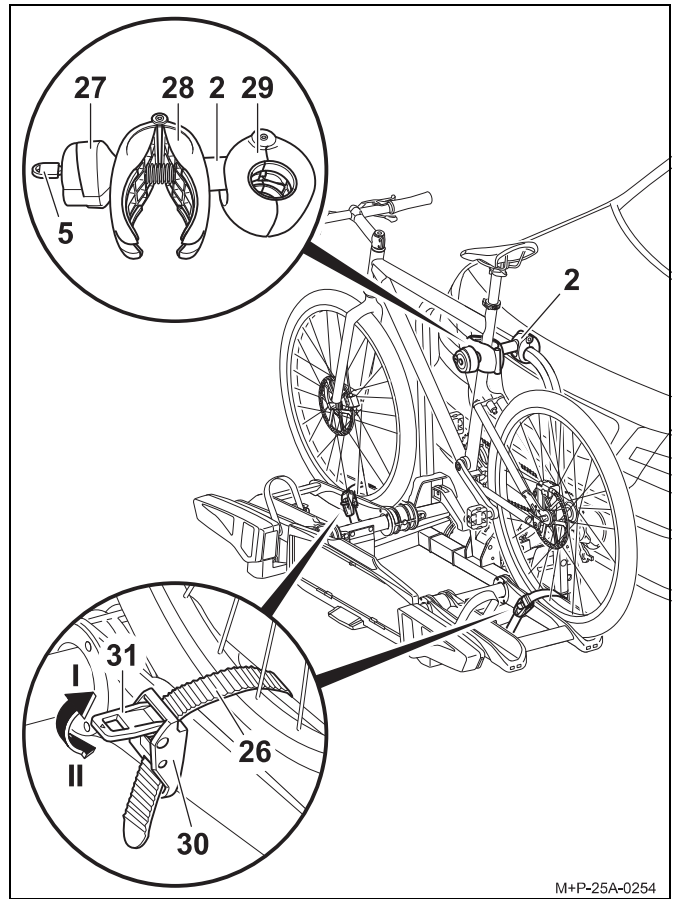


1. Remove the holder (2) from the packaging and prepare it for mounting the bicycle.
2. If necessary, unlock the twist grip (27) with the key (5).
3. Unscrew the clamp (28) with the twist grip (27) until the clamp (28) is open (A).
4. Press the clamp (28) together and hold it. The clamp (29) opens.



M+P-25A-0253

5. Position the open clamp (29) around the rack frame and release the clamp (28) to close it around the rack frame.
6. Press the tensioner (31) (arrow II) and pull out the lashing strap (26).



M+P-25A-0254

⚠ Attention

Only attach the holder (2) to the bicycle frame, as other parts of the bicycle could be damaged. Do not pinch components such as gear or brake cables. Defective holders must be replaced immediately.

7. Place the bicycle on the wheel rails and position the clamp (28) of the holder (2). Secure the bicycle against tipping.
8. Screw the clamp (28) to the bicycle frame with the twist grip (27).
9. Lock the holder (2) with the key (5) and remove the key (5).
10. Pass the lashing strap (26) centrally between two spokes, thread it into the buckle (30) and tighten it.

⚠ Attention

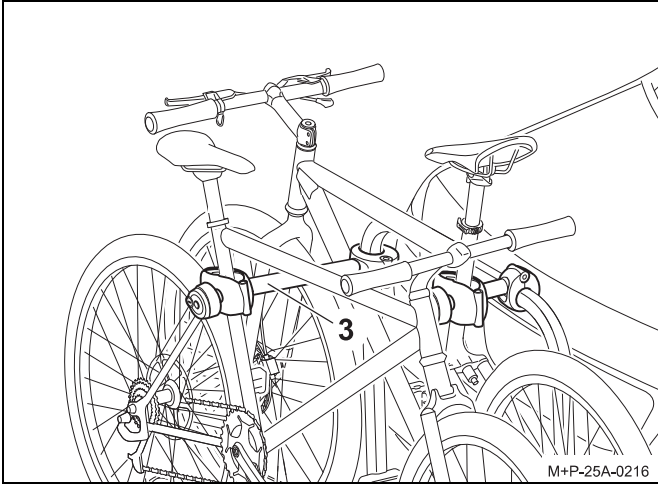
Do not tighten the lashing straps (26) too firmly, otherwise the tyres or rims could be damaged.

11. Use the tensioners (31) to tighten the lashing straps (26) (arrow I).

Note

The screw threads in the holders must be regularly cleaned and greased to prevent the twist grips from seizing up.

Mounting the second bicycle



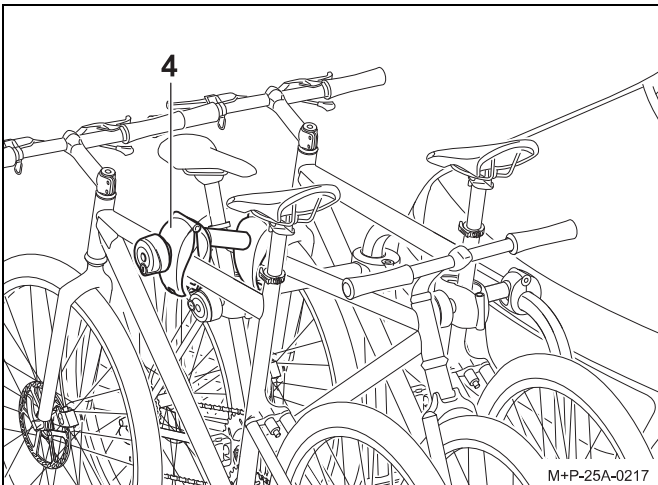
The second bicycle is mounted in the same manner as the first. Note that the bicycles are mounted in opposite directions.

⚠ Attention

Only attach the holder (3) to the bicycle frame, as other parts of the bicycle could be damaged. Do not pinch components such as gear or brake cables. Defective holders must be replaced immediately.

The second bicycle is fastened using the long holder (3).

Mounting the third bicycle⁴



The third bicycle is mounted in the same manner as the first. Note the opposite arrangement of all bicycles.

⚠ Attention

Only attach the holder (4) to the bicycle frame, as other parts of the bicycle could be damaged. Do not pinch components such as gear or brake cables. Defective holders must be replaced immediately.

The third bicycle is attached to the second one with the additional holder (4).

Removing the bicycles

Release the holders (2), (3) and (4) and remove the bicycles in the reverse order.

Folding the bicycle rack down and back up again

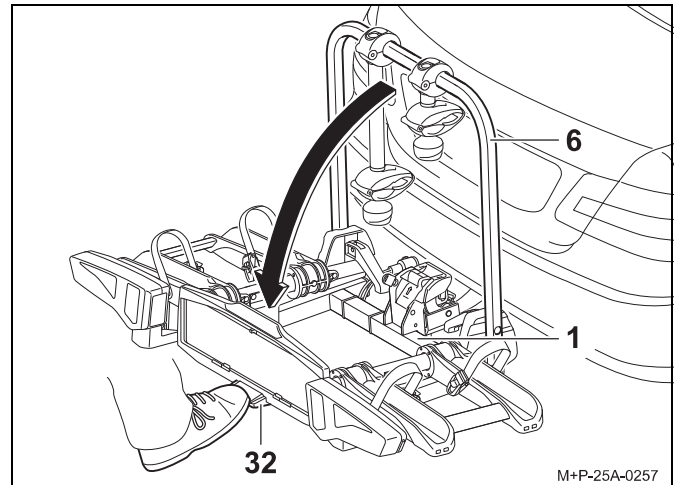
⚠ Attention

Slowly fold the bicycle rack down, making sure that no persons or objects are in the way. People may be injured and objects may be damaged if they get in the way.

Make sure the bicycle rack engages fully with both hooks and that it locks when folded up, otherwise it could swing down during a journey, injuring you or others and/or causing property damage.

Folding the bicycle rack down

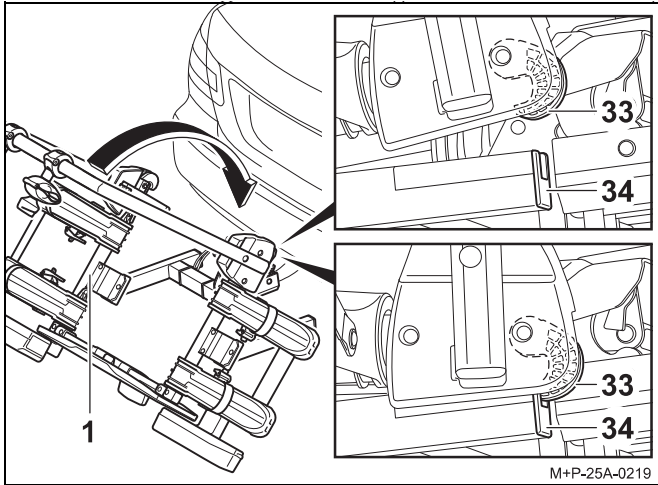
The bicycle rack can be folded down to load and unload the vehicle.



Press the foot lever (32) and pull the bicycle rack (1) down by pulling on the rack frame (6) or on the frame of a mounted bicycle.

4 Uebler i31 rack for 3 bicycles
(Item no. 15910/15911)

Folding the bicycle rack back up



1. Fold the bicycle rack (1) back up so that both hooks (33) are fully engaged and lock into the frame (34).
2. Shake the bicycle rack (1) to ensure that it is seated firmly. If necessary, fold the bicycle rack (1) down and back up again.

Preparation before driving

⚠ Attention

Always check all screw connections and fastenings of the bicycle rack and the bicycles after every assembly, before every trip and at intervals during lengthy trips to make sure they are sitting firmly, and retighten them if necessary. Otherwise, the rack and the bicycles mounted on it may come loose, injuring other persons or causing an accident. Repeat this check at regular intervals depending on road conditions.

⚠ Attention

Check that the lights are in perfect working order before each journey, otherwise accidents may occur.

Note

The number plate and the lights on the bicycle rack must not be obscured.

If the bicycle rack is not fully loaded, make sure that:

- Unused holders are removed from the rack frame and stowed safely in the luggage compartment
- All keys are removed and kept in a safe place
- The lashing straps on all the wheel rails are closed

Changing bulbs

⚠ Attention

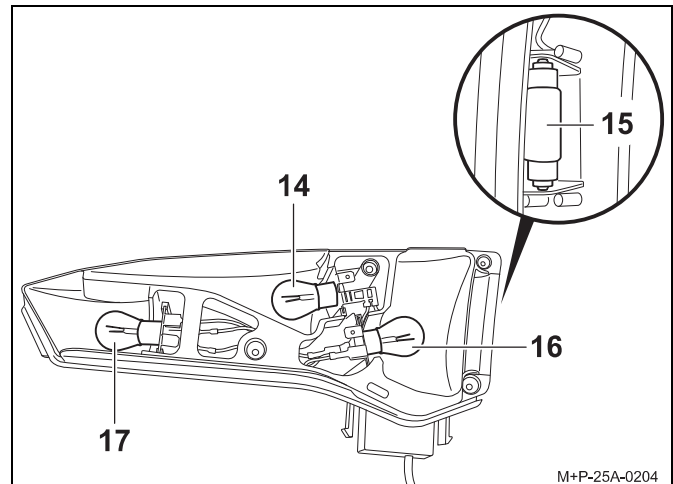
When changing bulbs the vehicle ignition must be switched off and the plug for the lights removed from the towbar electrical socket. Failure to do so can result in a short circuit or other damage. If you are not sure, have the bulbs replaced by a specialist workshop.

Note

The lamp change is described and illustrated using the left tail light unit on the bicycle rack. The procedure is the same for the right tail light unit.

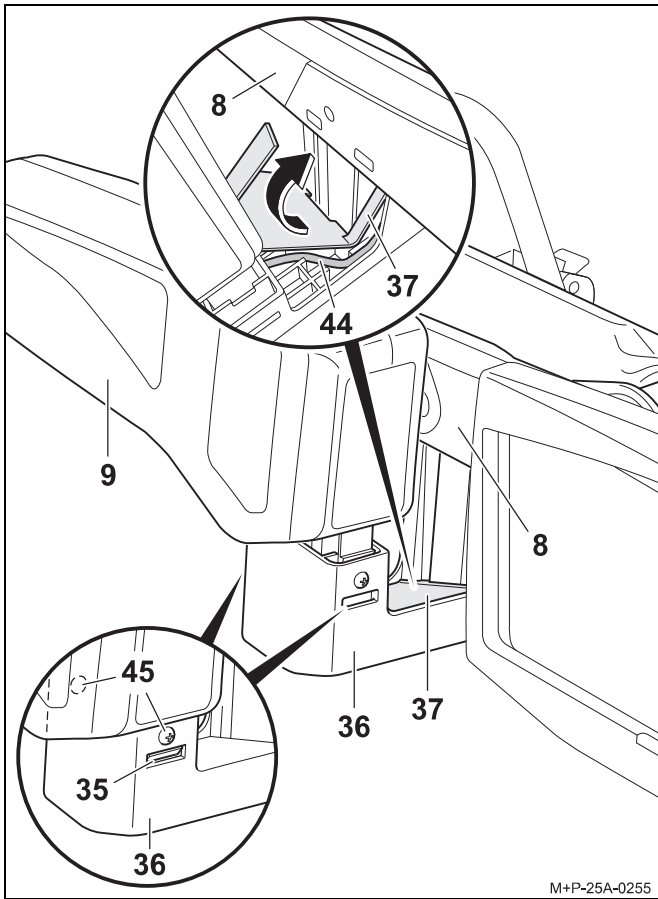
Note

When ordering a new bulb, you must specify which bulb it is (14, 15, 16, 17).

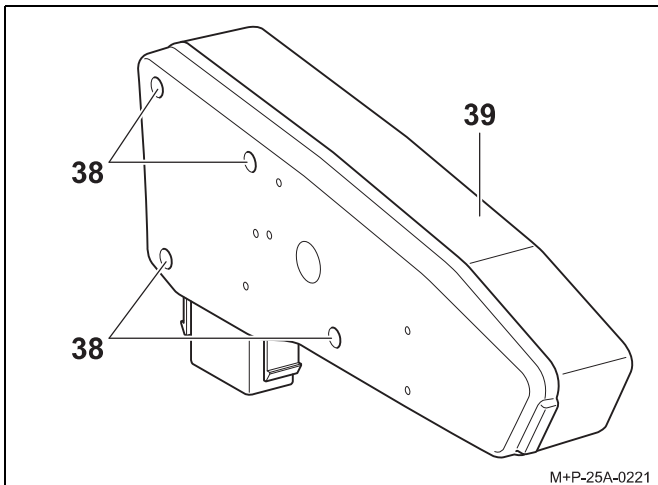


| Designation | Spare part no. |
|---|----------------|
| 14 Indicator ^a BL PY21W 12 V yellow | E1687 |
| 15 Number plate light ^a BL C5W 12 V (1.4 inch (35 mm) long) white | E1687 |
| 16 Rear fog light ^a for left tail light unit BL PR21W 12 V red Reversing light ^a for right tail light unit BL P21W 12 V white | E1687 E1687 |
| 17 Brake / tail light ^a BL P21/5W 12 V white | E1687 |

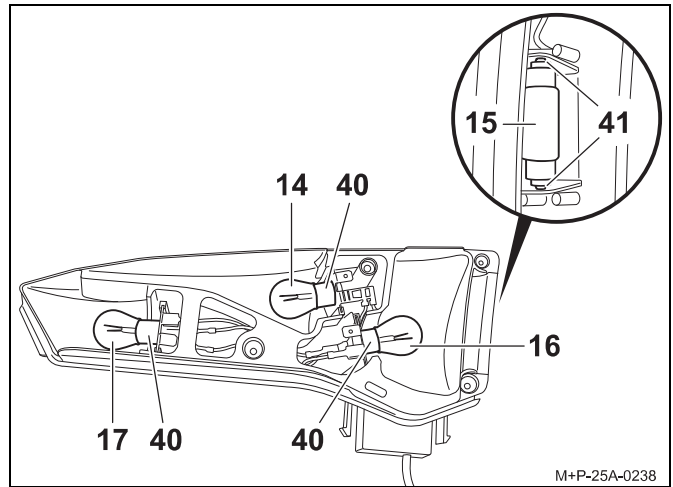
a Commercially available bulb.



1. Remove the screws (45). Press the catches (35) and carefully lift up the tail light unit (9).
2. With the cable (44) of the tail light unit (9), carefully lift up the cover (37) and thread it out in the direction of the arrow.
3. Remove the tail light unit (9) completely from the holder (36).



4. Remove the screws (38) and take off the lens (39).

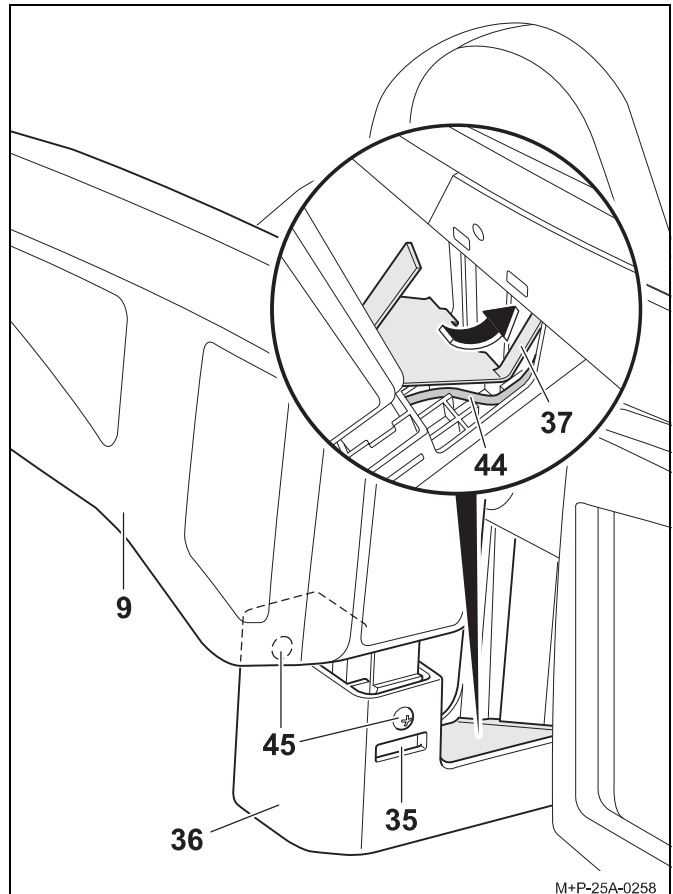


5. Press the defective bulb (14, 16, 17) gently into the socket (40), turn it 90° anticlockwise and pull it out.
6. Pull the bulb (15) out of the socket (41).

Note

Making sure you use a clean cloth, pick up the new bulb and insert it in the socket (40, 41).

7. Press the new bulb (14, 16, 17) slightly into the socket (40) and turn it 90° clockwise. Required bulbs, see page 20.
8. Press the new bulb (15) gently into the socket (41). Required bulb, see page 20.
9. Put the lens (39) back in and fasten it hand tight with the screws (38).



10. Push the tail light unit (9) into the holder (36) without locking.

11. Place the cable (44) in the cable guide of the holder (36).
12. Thread the long tab of the cover (37) into the wheel rail and insert the cover (37) completely into the holder (36).
13. Push the tail light unit (9) completely into the holder (36) until the catches (35) audibly engage, then tighten the screws (45).

General safety instructions

Vehicle owners are responsible for ensuring that their field of view and hearing are not impaired by the load or the condition of the vehicle. It must be ensured that the vehicle and load are compliant with the regulations and that vehicle road safety is not impaired by the load.

The required lighting systems and equipment must also be present and operational during the day.

These mounting and operating instructions contain the general approval of the towbar rack and must always be kept in the vehicle when the rack is mounted.

Observe the legal regulations for use of the bicycle rack in the country of use.

Attention

Please observe the work and safety instructions described in these mounting and operating instructions at all times. The towbar rack is intended only for transporting bicycles. The bicycle rack is not suitable for use on rough terrain. Always check all screw connections and fastenings of the bicycle rack and the bicycles after every assembly, before every trip and at intervals during lengthy trips to make sure they are sitting firmly, and retighten them if necessary. Repeat this check at regular intervals depending on road conditions. During the trip, the driver should check in the rear view mirror if the bicycle rack and bicycles move or change position. If there are any changes, slow down and stop at the next safe opportunity, and retighten the screw connections and attachments of the bicycle rack and bicycles. Otherwise, the rack and the bicycles mounted on it may come loose, injuring other persons or causing an accident.

Attention

Moving parts such as screw threads in the holders and quick-release clamps must be regularly cleaned and greased so that the twist grips do not seize up. Do not use lubricants on the pre-mounted screw connections. This could cause the screw connections to loosen and the bicycle rack and the mounted bicycles to detach from the vehicle, thus causing injury to you and other persons, or resulting in an accident.

Attention

If the load (the bicycles) extends more than 16 inch (40 cm) beyond the outer edge of the illuminated surface of the side marker lights or tail lights of the bicycle rack, the load must be marked at no more than 16 inch (40 cm) from the edge and 59 inch (150 cm) above the road with a white light at the front and a red light at the back. Separately mark the bicycle wheels extending out laterally during transport. When driving at night, cover the rear lights and reflectors of the bicycles to prevent confusion with the vehicle's tail lights and to avoid impairing or confusing other road users. Failure to observe this may cause accidents.

Attention

Before starting a trip, check that the lights are functioning correctly. When the rear fog light on the bicycle rack is switched on, the rear fog light of the vehicle must be switched off, in other words they must not be lit at the same time.

In vehicle models whose type approval was initially issued after 1 October 1998, neither the mounted rear rack system nor its load may cover the vehicle's third brake light. The vehicle's third brake light must be visible to the left and right, relative to the vehicle's longitudinal axis, at a horizontal angle of 10° relative to the top edge of the lamp, at a vertical angle of 10°, and, relative to the lower edge of the lamp, at a vertical angle of 5°.

If these values are not met, a "third" replacement brake light must be installed.

Failure to observe this may cause accidents.

Attention

The mounted bicycle rack and bicycles alter the vehicle's driving and braking characteristics as well as its susceptibility to side winds. Do not exceed a speed of 81 mph (130 km/h). Do not cover the bicycles with items such as tarpaulins or protective covers as this greatly affects the driving characteristics by increasing the area exposed to the wind. Slide any heavy cargo in the luggage compartment as far forward as possible to avoid excessively loading down the rear of the vehicle.

Always drive appropriately to the road, traffic and weather conditions and take special care when driving with a loaded bicycle rack.

Otherwise, the rack and the bicycles mounted on it may come loose, injuring other persons or causing an accident.

Attention

If the vehicle has an electrically operated rear lid, allow for the necessary clearance when mounting the bicycle rack. If possible, deactivate the electric rear lid and operate it manually.

Remove the bicycle rack before using automatic car washes. Otherwise, the bicycle rack, the vehicle and/or the car wash could be damaged.

Note on disposal

Dispose of components, accessories and packaging for environmentally sound recycling. Do not dispose of the lamp unit with household or residual waste.

According to the European Directive 2012/19/EU and national laws, electrical equipment that is no longer usable must be collected separately and recycled in an environmentally friendly manner.

Separate the lamps from the rack and take the components that are no longer usable to a suitable collection point.

Ask your specialist dealer for advice.

